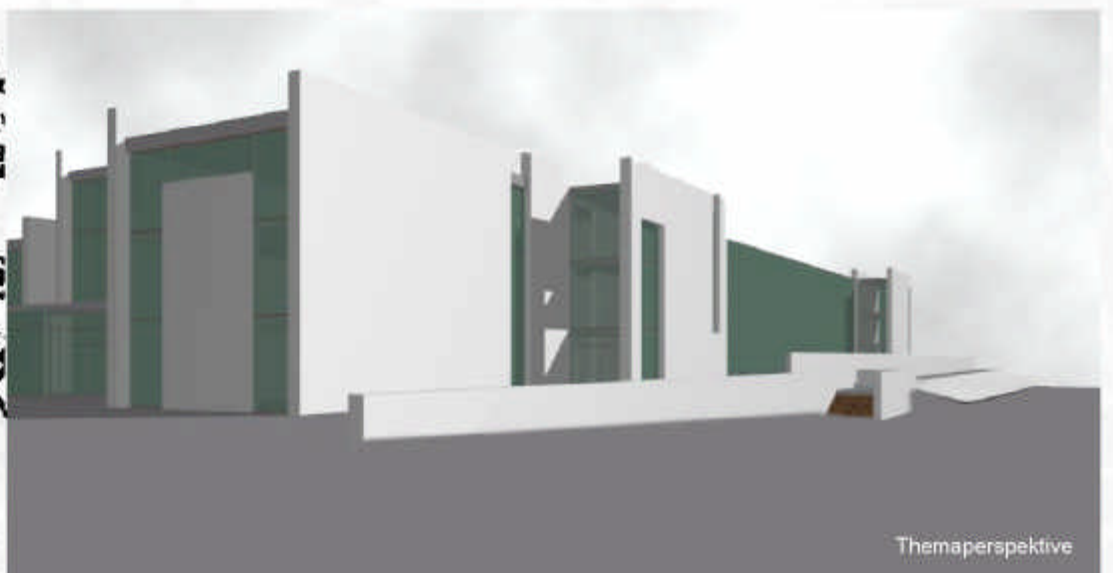


Lageplan 1:500



Schwarzplan 1:10.000



Themaperspektive



Erdgeschoss - M 1:200



Eingangsperspektive



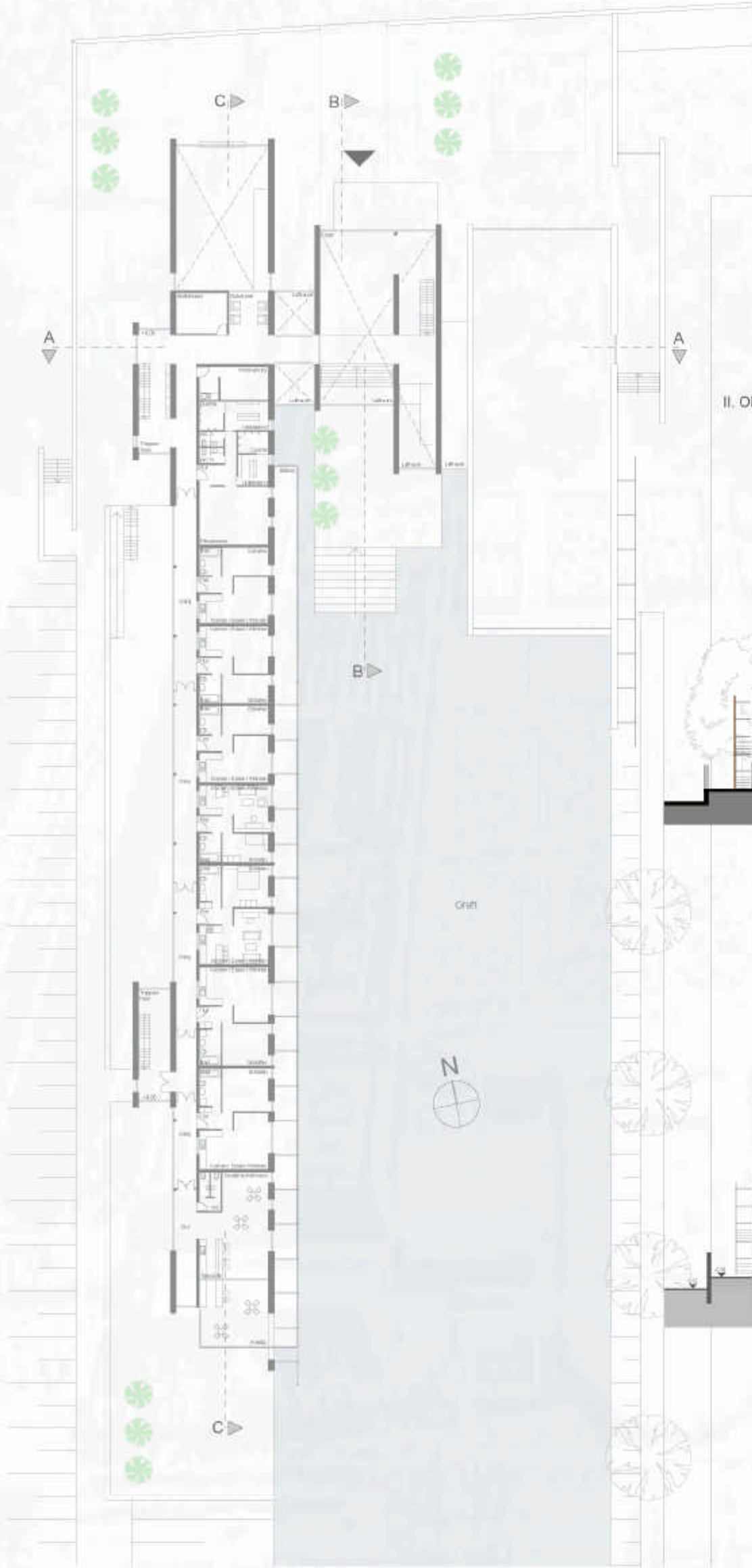
I. Obergeschoss - M 1:200



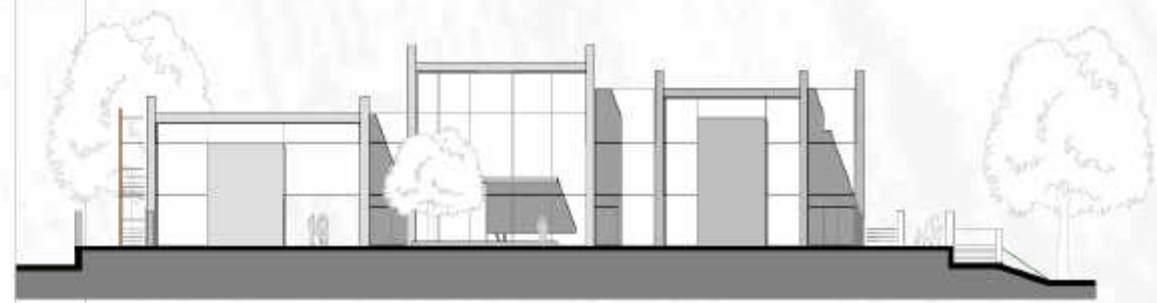
Innenhofperspektive



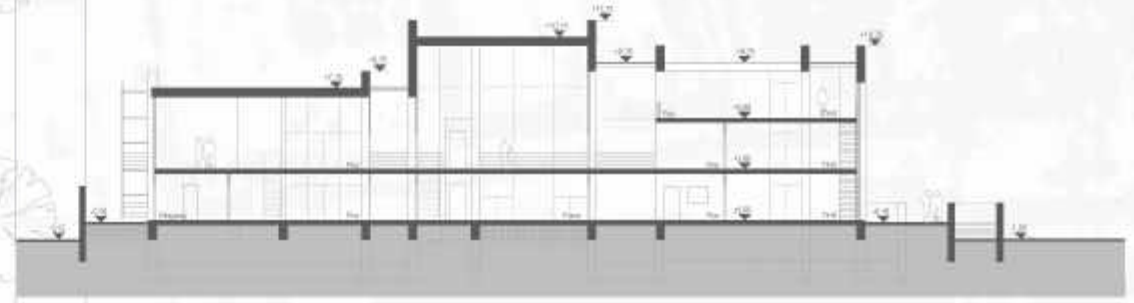
Ostansicht - M 1:200



II. Obergeschoss - M 1:200



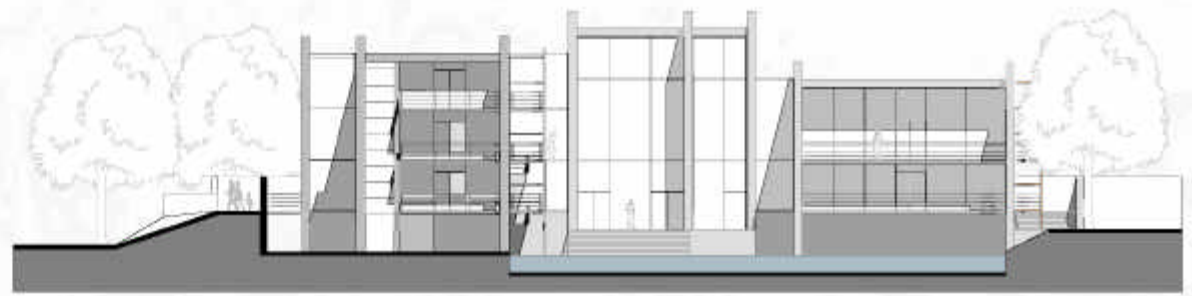
Nordansicht - M 1:200



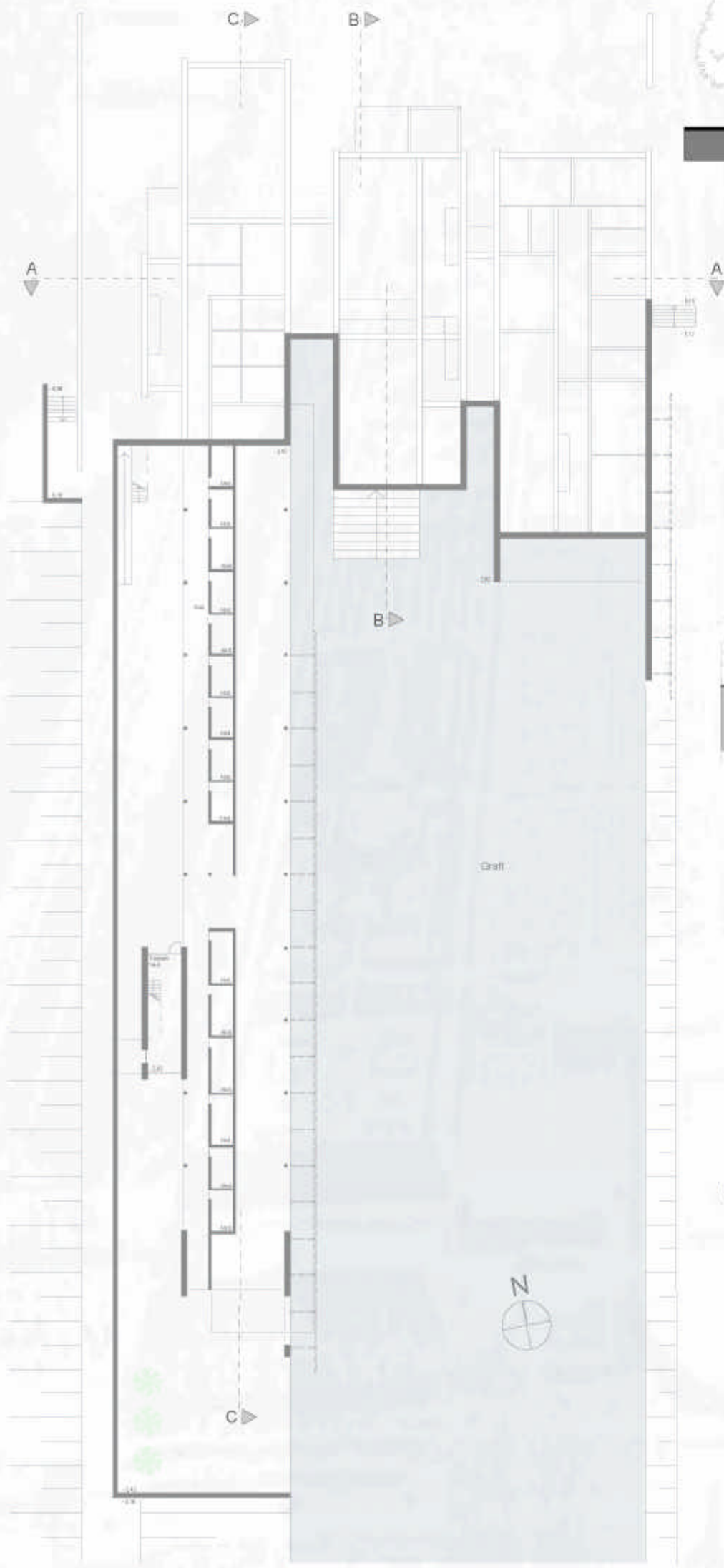
Schnitt A - A - M 1:200



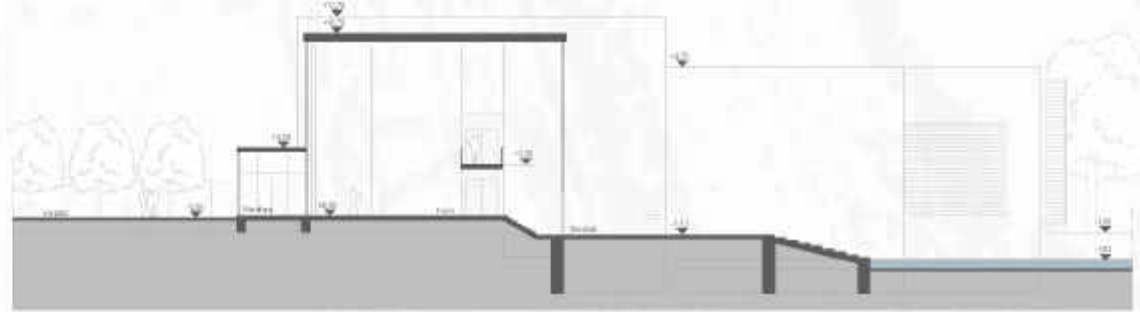
Westansicht - M 1:200



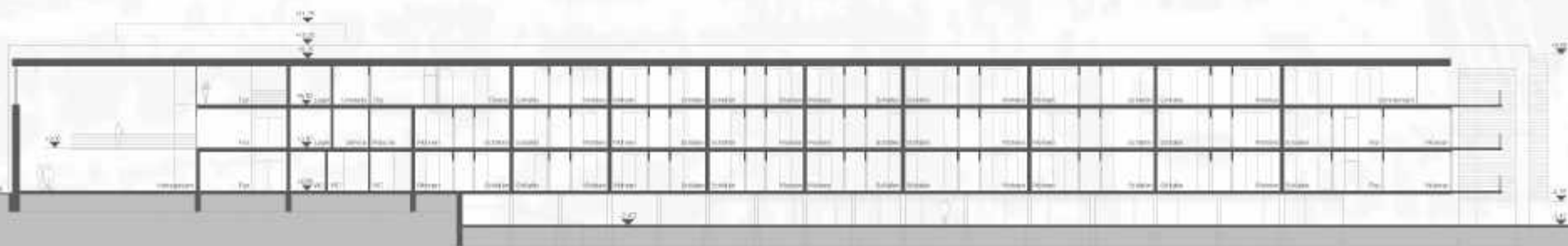
Südansicht - M 1:200



Untergeschoss - M 1:200



Schnitt B - B - M 1:200



Schnitt C - C - M 1:200

